

## Specifications

### System function:

General:	Automatic, discrete, random access STAT sample priority
Throughput:	Up to 150 tests/hour (without ISE) Optional wash station
Principle:	End-point, fixed-time, kinetic
Methodology:	Linear/non-linear multi-point calibration
Programming:	Open system, closed system on demand

### Control and calibration:

Calibration mode:	Linear, Logit-Log 4P, Logit-Log 5P, Spline, Exponential, Polynomial
Control software:	Westgard multi-rule, Cumulative sum check, Twin plot, L-J Chart
Operation system:	Win 7/ Win 8
Interface:	RS-232
Power supply:	AC 100~240V, 50/60Hz, <=300VA
Temperature:	10-30° C
Humidity:	30-85% RH
Dimension:	720mm (W) x450mm (D) x550mm (H)
Weight:	60 Kg

### Reagent/Sample handling:

Reagent/Sample tray:	40 reagent positions, 40 sample positions in cooling compartment (4~12°C)
----------------------	--

### Reagent volume:

R1: 150~450ul, step by 1 ul

R2: 10~300ul, step by 1 ul

Sample volume: 2~50ul, step by 0.1 ul

Reagent/Sample probe: Liquid level detection and tracking,  
vertical & horizontal collision protection  
and inventory checking

Probe cleaning: Automatic washing of interior and exterior  
Carry-over < 0.1%

Automatic dilution: Pre-dilution and post-dilution  
Dilution ratio up to 1: 200

### Optical system:

Light source: Halogen tungsten lamp

Photometer: Maintenance-free sealed photometer,  
rear spectrophotometry by filter

Wavelength: 8 wavelengths: 340nm, 405nm, 450nm,  
510nm, 546nm, 578nm, 630nm, 670nm

Absorbance: 0~3.5Abs

### Reaction system:

Cuvette: Rotating tray, containing 50 cuvettes  
Semi-permanent rigid UV plastic cuvette

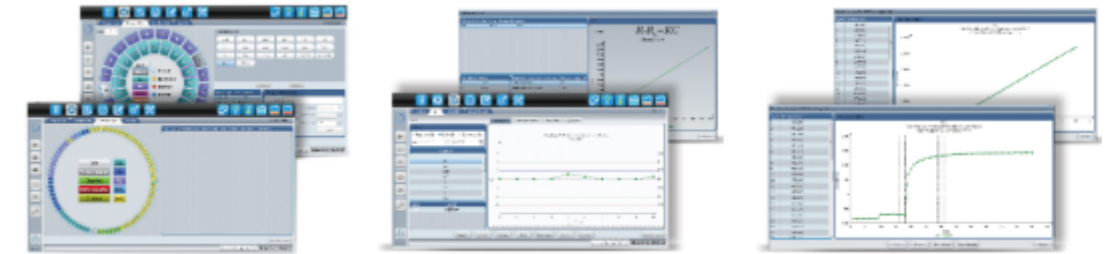
Reaction volume: 160~500ul

Reaction temperature: 37°C±0.1°C

Mixer: Stand alone mixing bar

Cuvette washing: 6-step washing station(optional)





### User-friendly software

- Easy operation with iconic interface
- Multi-language available
- Easy reagent parameters setting
- Support batch request
- Panel/calculation test
- Print out report template editable
- Auto troubleshoot failure recovery
- Powerful statistic system
- Manual dilution, auto dilution and post dilution
- Easy re-run and restore test
- Bilateral LIS interface with HL7 protocol

### Calibration and QC

- Multiple calibration mode
- Advanced algorithm to obtain best calibration curve
- Multi QC rules: Westgard, Cumulative sum check, Twin plot

### Real time monitoring

- Reaction curve, calibration test curve and QC test curve
- Sample, reagent and reaction cuvette status
- Lamp intensity, distilled water tank and waste tank status
- Reaction disk and reagent disk temperature

### Optional

Internal PC with touch screen

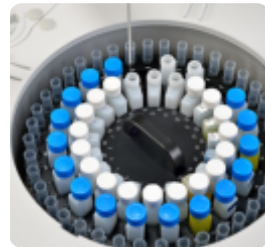


Barcode reader



### Sampling system

- High polished nano material sample/reagent probe
- High accuracy ceramic syringe
- Auto depth adjustment
- Liquid level detection, vertical and horizontal collision protection
- Maintenance-free rotor with stable movement



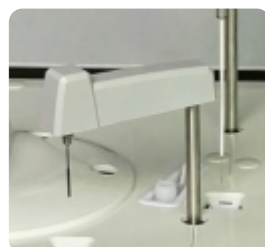
### Sample & reagent disk

- 24-hour reagent refrigerator: 4-12°C
- Noise free water cooling design
- 40 reagent positions
- 40 sample positions with STAT priority
- Optional barcode scanner available



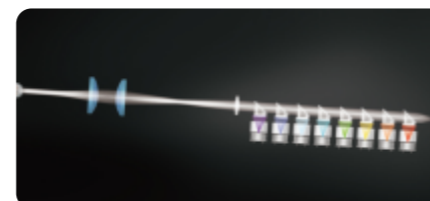
### Reaction system

- 50 reaction cuvettes
- Solid heating
- Reaction temperature: 37°C±0.1°C
- Optional wash station



### Anti-contamination design

- High polished nano material mixer
- Automatic sample/reagent probe washing
- Intelligent anti-contamination program



### Optical system

- Halogen tungsten lamp with >2000H life time
- Full-sealed matrix spectrometric system
- Simultaneously dual-wavelength detection to avoid interference
- Silent water cooling design